

# Angle Vale Primary School

*Building our bridge to the future*



Honesty • Respect • Confidence • Resilience



## Family Information Book



Government of South Australia  
Department for Education

Heaslip Road, Angle Vale SA 5117 • Phone: (08) 8284 7222 • Fax: (08) 8284 7640  
Email: [dl.0255.info@schools.sa.edu.au](mailto:dl.0255.info@schools.sa.edu.au) • [www.avps.sa.edu.au](http://www.avps.sa.edu.au)

# Table of Contents

1. **Welcome**
2. **Admission**  
**Enrolment**  
**Transition**  
**Pre School**  
**Emergency Contact**  
**Secondary School**  
**Enrolment**  
**Attendance**  
**Lateness**  
**Withdrawal of children**
3. **School Times**  
**Term Dates**  
**End of Term Dismissal**  
**Canteen**  
**Governing Council**  
**Policies**  
**Fundraising**
4. **Materials and Services**  
**Charge**  
**School Card Scheme**  
**School Dress Code**  
**Language Other Than**  
**English**  
**School Bus**
5. **Student Governing Council**  
**Library**  
**Excursions Camps and**  
**Performances**  
**Homework**  
**Reporting to parents**  
**School Dental Service**  
**School Bank**  
**Out of School Hours**  
**Care**
6. **Play is the Way**  
**- Leadership Awards**  
**Communication**
7. **Road Safety and Parking**  
**Smoke Free Zone**  
**School Map - Parking Areas**
8. **School Map**



## Welcome

Dear Families,

Welcome to Angle Vale Primary School. Angle Vale Primary School is a dynamic learning community offering a wide variety of quality programmes for your child.

Our friendly staff is committed to meeting the learning needs of every child so that they are given a solid foundation for learning throughout life.

A respectful and co-operative relationship between home and school is an important factor in your child's learning. We look forward to your interest in, and support of, the learning program.

We hope you enjoy your association with the school and look forward to a long and rewarding partnership with you.

***Principal - Angle Vale Primary School***

---

In my role I oversee the Special Education and the Intervention programs at the school. This involves students verified with a disability and those with learning difficulties and special needs.

***Deputy Principal***

---

This role assists students across the school with issues related to wellbeing. This includes areas such as behaviour, attendance and student and community engagement, as well as creating opportunities for students to have a voice in our school through the Student Governing Council.

***Assistant Principal***

## Students commencing school for the first time

Children turning 5 **on or before April 30th** will start school on the first day of Term 1. Children turning 5 **on or after May 1**, will start school on the first day of term one in the following year. The minimum age for starting school will be four years and eight months.



## Enrolment

Parents are encouraged to enrol their children 6 months before they are due to start school, so that class and staffing structures can be planned ahead.

## Transition

Students enrolled to begin Reception will have the opportunity to have transition visits. A Parent Information Session will be held to assist parents to become familiar with the school. You will be notified by letter as to when these will occur.

## Angle Vale Pre-School

The Preschool is located at Fradd Road, Angle Vale. Phone (08) 8284 7786.

## Student Information

At the beginning of each year you will receive a print out of details that we have on our system for your child. If the information is not up to date please amend and return to the school.

This is to maintain the most up to date information about your child and family circumstances eg. change of address, phone numbers inc. parent, work and emergency contacts.

## Secondary School Enrolment

Families of Year 6/7 students receive a package of information explaining procedures for secondary school enrolment at the beginning of Term 2. For additional information, please contact the Front Office.

## Attendance

A high rate of attendance is important for learning. Children should attend school every day unless they are ill. If your child is absent please inform the school by phone, via Skoolbag, Class Dojo or email.

Unexplained absences will be followed up by a letter or phone call home.

If your child/ren will be absent from school for an extended period of time eg a family holiday, an exemption form needs to be completed. This form is available from the school's Front Office.

## Lateness

Arriving late for school is disruptive to learning. Students who are late for school must report to the Front Office with their parents or a note from their parents, so that the reason for lateness can be recorded. Students will be given a "Late Arrival" slip to give to their teacher.

## Withdrawal of a child from school

Parents (or other adults with authority) may withdraw a child from school during the day for essential medical / dental appointments.

Please report to the Front Office to obtain a "withdrawal slip" to present to the teacher so the student can be released.

**All children must be collected from the classroom. Children will not be released without a withdrawal slip.**

If your child is to go home with anyone besides you, you must let the Front Office know by personal contact, written note or telephone call. Photo ID will be required.

3.

## School Times

The school timetable commences at **8:55am** and ends at **3:15pm**.

<b>8:55am</b>	<b>Children report to classrooms</b>
<b>10:45 - 11:15am</b>	<b>1st Break</b>
<b>1:05 - 1:35pm</b>	<b>2nd Break</b>
<b>3:15pm</b>	<b>Dismissal</b>



Every care is taken with children in the yard, and it is with this in mind we ask for parents help in the following ways:

- Please make sure your child/children do not arrive at school before 8:30am and are collected at 3:15pm.
- All students, apart from bus students, are expected to leave the school grounds by 3:30pm.
- Please notify the school if there is a change to the normal collection procedure of your child, particularly if you are running late or someone other than yourself will be taking them home.

## Term Dates

	<b>2021</b>	<b>2022</b>
<b>Term 1:</b>	<b>27 January - 9 April</b>	<b>31 January - 14 April</b>
<b>Term 2:</b>	<b>27 April - 2 July</b>	<b>2 May - 8 July</b>
<b>Term 3:</b>	<b>19 July - 24 September</b>	<b>25 July - 30 September</b>
<b>Term 4:</b>	<b>11 October - 10 December</b>	<b>17 October - 16 December</b>

## End of Term

On the last day of each term, school will dismiss at **2:15pm**.

## Canteen

We use Rory's Lunches. Please refer to the information in your pack.



## Governing Council

Members of the Governing Council are elected at our Annual General Meeting, which is held during February each year.

Members are elected for a 2 year term and approximately half of the Council retire each year - they are, of course, eligible for re-election.

At the Annual General Meeting, the new Council is formed and will meet to elect its officers.

Meetings are held twice a term and the dates are published in the school newsletter.

All parents are welcome to attend.

## Policies

Policies are reviewed and ratified by staff and/or Governing Council. Copies of school policies are available on the school's website.

These are also available to parents from the school's Front Office on request. The Governing Council holds a copy.

## Fundraising

Fundraising is a sub-committee of Governing Council. The role of this committee is to raise money to provide desired resources and improvements for the school. Parent support is very welcome during fundraising events. Student Governing Council have an active role in deciding where this money is dispersed.

## Materials and Services Charge

Governing Council determines the amount applicable for the following year and invites parents to a meeting to discuss the charge prior to ratification.

Accounts can be paid by cash, cheque (please make any cheques payable to "Angle Vale Primary School") or by EFTPOS. Direct Debit or Payment agreements can be organised by contacting the schools Finance Officer.

## School Card Scheme

This is a means tested scheme to provide assistance towards the payment of school fees.

Families are eligible for the School Card Scheme if they are invoiced by this school during the calendar year and the combined family income is within the School Card limits. You can also apply on grounds of hardship. Forms are available from the Front Office.

Eligible families must complete a School Card Application Form each year.

## School Dress Code

The School Dress Code has been developed and approved by Governing Council. The wearing of school uniform is compulsory. Approved hats are required during Terms 1 and 4. A price list of items stocked by the school including hats, polo shirts, dresses, jumpers and jackets is available from the Front Office.

The School Uniform is as follows - (with or without school logo)

- Black track pants or jeans
- Gold or Black Polo Shirt with collar
- Black Windcheater
- Black jacket
- Black/Gold slouch or Bucket hat (compulsory)
- Dress in yellow check,
- Black shorts, skirts or skorts

# NOTE

Please ensure all clothing is labelled.

Thongs are not acceptable school footwear.

## Specialist Subjects

Angle Vale Primary School offers the following specialist subjects:

- The Arts
- LOTE - Italian
- Design and Technology
- Physical Education
- HASS

## School Bus

Some students who attend Angle Vale Primary School use the Education Department bus to travel to and from school. The bus is organised by Gawler High School. To be eligible for travel on the school bus, students must live 5 kms or more from the school. If a student lives closer than 5 kms to the school, he/she may be given permission to use the school bus if there is room. This permission can be withdrawn at any time if the bus becomes overcrowded.

No students are permitted to use the school bus without the parents first obtaining the prior approval of the Principal of Gawler High School. A card is issued to approved children prior to them travelling by bus.

Parents who believe that their children are eligible to use the school bus should contact Gawler High School on (08) 8521 2400.



## Student Governing Council (Student Voice)

An active Student Governing Council operates to empower students in decision-making and to increase their involvement in school organisation, school activities and committees.

All students in the school participate in regular class meetings.

Members from each class are elected for two terms to the Angle Vale Primary School Student Governing Council. One male and one female represents each class.

The R - 7 Student Governing Council meets on a fortnightly basis and the Executive Council meet on the alternate fortnight. Members report back to students through class meetings and assemblies. Student Governing Council members are able to take issues raised to Staff Meeting, Leadership Meeting or Governing Council Meeting if required.

The Primary Assistant Principal-Wellbeing facilitates the Student Governing Council.

## Library

**Student Library hours: 8:30am – 3:30pm, Monday to Friday.**

In addition to lessons in the library dealing with literature and research skills, each class has a regular weekly borrowing time. Your child's teacher will notify you when this is held. Parents are always welcome to come with their children to the library to borrow before and after school.

Students are able to borrow books for a period of two weeks. New Reception children are limited to one book, Year 1 and 2 students are able to borrow two books and Year 3 – 7 students four books.

Please encourage your children to be responsible library users by ensuring books are exchanged regularly and cared for at home.

Library bags are encouraged and would be appreciated to help protect our books.

## Excursions and Performances

These activities can be a valuable part of the balanced teaching program. All students are encouraged to participate in these activities. Due dates are set for payments and returns of consent forms. Families are required to return all necessary monies and forms by this date to enable student participation.

## Homework

Teachers may set homework. The teacher will give a general overview of the class arrangements. When homework is set parents are asked to provide a supportive and encouraging environment to assist in successful completion.

## Reporting to Parents

Reporting on student achievement occurs in a number of ways. The current arrangements include:

- **an interview in late Term 1 and on request in Term 3**
- **written reports at the end of Terms 2 and 4**

Parents and teachers are encouraged to arrange to meet on other occasions to discuss any issues related to a student's learning.

## School Dental Service

Our school dental service is the Elizabeth GP Plus Dental Clinic. Free dental treatment is available to families who hold a Health Care Card / Pension Card / School Card for students. A fee will apply to families who do not hold concession cards. To contact the clinic please call 7485 4000.

Dental for Schools visit us once a year. Families are notified and can choose if you would like to use this service.

## School Bank: Bank SA

**Bank day is Monday.** New accounts may be opened at any time at any SA Bank branch. Forms are available from the school's office on request.

## Out of School Hours Care

The school operates an Out of School Hours Care service through Camp Australia. Before school, after school and vacation care are offered. Enrolment forms can be obtained from OSHC directly or via the Camp Australia website [www.campaustalia.com.au](http://www.campaustalia.com.au).

Our Out of School Hours Care Service coordinator can be contacted on 0450 265 054.

An information flyer is available from the school's Front Office.



If someone is unlike you, seek to understand them.

**TREAT OTHERS AS YOU WOULD LIKE THEM TO TREAT YOU.**



School is about stepping bravely into the unknown. The unknown is often uncomfortable. The braver you are, the more you learn.

**BE BRAVE – PARTICIPATE TO PROGRESS**



We don't come to school to be better than others. We come to school to better ourselves by being able to work with others.

**PURSUE YOUR PERSONAL BEST NO MATTER WHO YOU WORK WITH**



If you don't know why you're doing something then don't do it because it's most likely wrong.

**HAVE REASONS FOR THE THINGS YOU SAY AND DO**



We do the right thing because it's the best thing to do.

**IT TAKES GREAT STRENGTH TO BE SENSIBLE**

#### SELF-MASTERY CHECKLIST:

- Am I doing the right thing or the wrong thing?
- Am I making a strong decision or a weak decision?
- Are my feelings in charge of my actions or is my thinking in charge?
- Am I running away from the problem or am I dealing with it?
- Am I being my own boss or am I inviting my teacher to be my boss?
- Is my teacher trying to help me or hurt me?

## Play Is The Way - Leadership Awards

Play is the Way (PITW) is a games program designed to go beyond the development of physical skills and fitness to promoting social and emotional well-being.

Our behaviour learning program is based on the PITW philosophy:

- Treat others as you would like them to treat you
- Be brave – participate to progress
- It takes great strength to be sensible
- Pursue your personal best, no matter who you work with
- Have reasons for the things you say and do

Our Leadership Awards recognise positive student behaviour and are based on the five philosophies of the PITW. At our fortnightly assemblies, one student from each class who has demonstrated a positive behaviour that fits under one of these areas will be presented with the associated certificate recognising that behaviour.

We believe that by embedding the philosophies across the site in both classroom practice and behaviour recognition we will provide a strong base for our students to learn and develop the skills needed to be engaged learners and members of the community.

## Communication

At Angle Vale Primary School we appreciate that communication is of key importance. The two main ways of communicating with families are via our newsletter, Skoolbag app and Class Dojo.

### Newsletter

Our newsletter is published on the school website [www.avps.sa.edu.au](http://www.avps.sa.edu.au) on Thursdays of weeks 3, 6 & 9 of each term and is also sent out on the Skoolbag app. The newsletter provides families with important information concerning school events, fundraising activities, dates to remember and district news. Families can opt to have a paper copy of the newsletter sent home with the youngest child by requesting this in writing through the Front Office each year.

### Skoolbag

The Skoolbag app is free and can be accessed on all of your devices. The app is used to send out reminders, class newsletters and information, school newsletters and event information. Please ensure you have subscribed to your child's class or relevant group to receive notifications when information is posted.

### Class Dojo

The Class Dojo app is free to download. Each child receives an individual code from their class teacher. Parents will have access to their child's profile and can communicate with the class teacher.

## Skoolbag

Complete communication solution

### How To Install Skoolbag On Your Smartphone

#### For iPhone and iPad users:

1. Click the "App Store" icon on your Apple device.
2. Type your school name in the search, using suburb name will help.
3. You will see your school appear, click "Get" then "Install".
4. The app is FREE to download.
5. When installed click "Open".
6. Select "OK" to receive push notifications, when asked.
7. Click the "More" button on the bottom right of the App, then "Setup".
8. Toggle on the Push Categories that are applicable for you by tapping the on/off switch.



Google play iTunes

#### For Android users:

You must first have signed up with a Google Account before installing the app.

1. Click the "Play Store" button on your Android Device
2. Click the magnifying glass icon at the top and type in your school name, using suburb name will help.
3. Click the school name when it appears in the search.
4. Click the "Install" button.
5. Click "Accept" for various permissions (please note, we do not modify any of your personal data on your device).
6. Click "Open" when installed.
7. Click the "More" button on the bottom right of the App, then "Setup".
8. Toggle on the Push Categories that are applicable for you by tapping the on/off switch.



Google play

Please Note: Some brands of Android phones need the setting in "Notification Manager" changed to "Allow" instead of "Notify" in order for the push notifications to work. The phone must also be running at least version 4 system software to run the app.

#### For Windows 81 Phone and Windows 81 or 10 device users:

1. Go to the Windows Store on your 81 Windows Phone or Windows 81/10 Device
2. Search for "Skoolbag" in the keyword app search
3. Install the Skoolbag app
4. Find your school either by using the keyword search or location service.
5. Click the "Pin" icon to pin the school tile to your Windows Phone home screen.
6. Click the "More" button on the bottom right of the App, then "Setup"
7. Toggle the Push Categories that are applicable to you by tapping the on/off switch.

Please Note: The Skoolbag Windows App is for 81 version Windows Phones, or Windows 81 and 10 devices.



Windows Phone

## Road Safety & Car Parking

For everyone's safety please comply with the following parking regulations.

### School car park

The two car parks are for staff use only during school hours. There have been a number of near misses involving students being in the car park getting into cars while other drivers are reversing etc.

Provide a good example by safely using the school crossing to cross Fradd Road and the traffic lights on Heaslip Road.

Comply with all parking restrictions as detailed below and on the map.

### Front of school parking:

- Passenger Loading Zone - available from 8:30am - 9:30am and 3:00pm - 4:30pm.  
This means the driver must remain in the vehicle. Please quickly clear this area.
- Opposite side of front of school is available for parking before 3:30pm and after 4:00pm. This area is a bus zone and operates from 3:30pm - 4:00pm in the afternoon.

### Back of school Parking:

- Accessed from Heaslip Road via Heaslip Gardens Estate, Gabriella Court.  
(Last right heading toward Angle Vale Rd)

**Heaslip Road is a No Standing Zone.** This means no dropping off and / or picking up students.

We look forward to your cooperation in keeping our students safe. Please refer to parking signs located around these areas.

## Smoke-Free Zone

All Education Department schools are **SMOKE-FREE ENVIRONMENTS**. Smoking is not permitted within the school boundaries 24 hours a day.

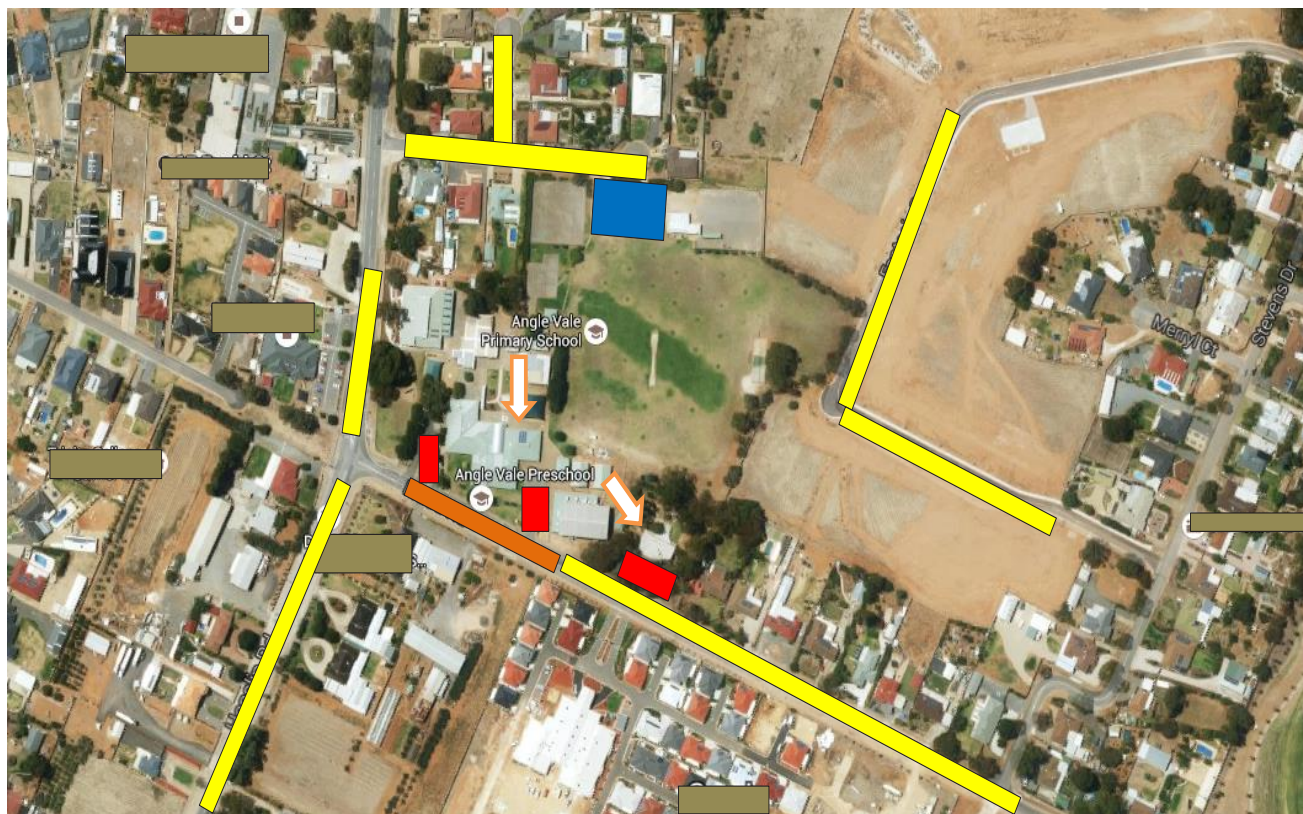
## School Map - Parking Areas

Drop and go zone / bus zone

All day offsite parking for families

All day onsite parking for families

Staff, Preschool & Permit parking





# School Map

